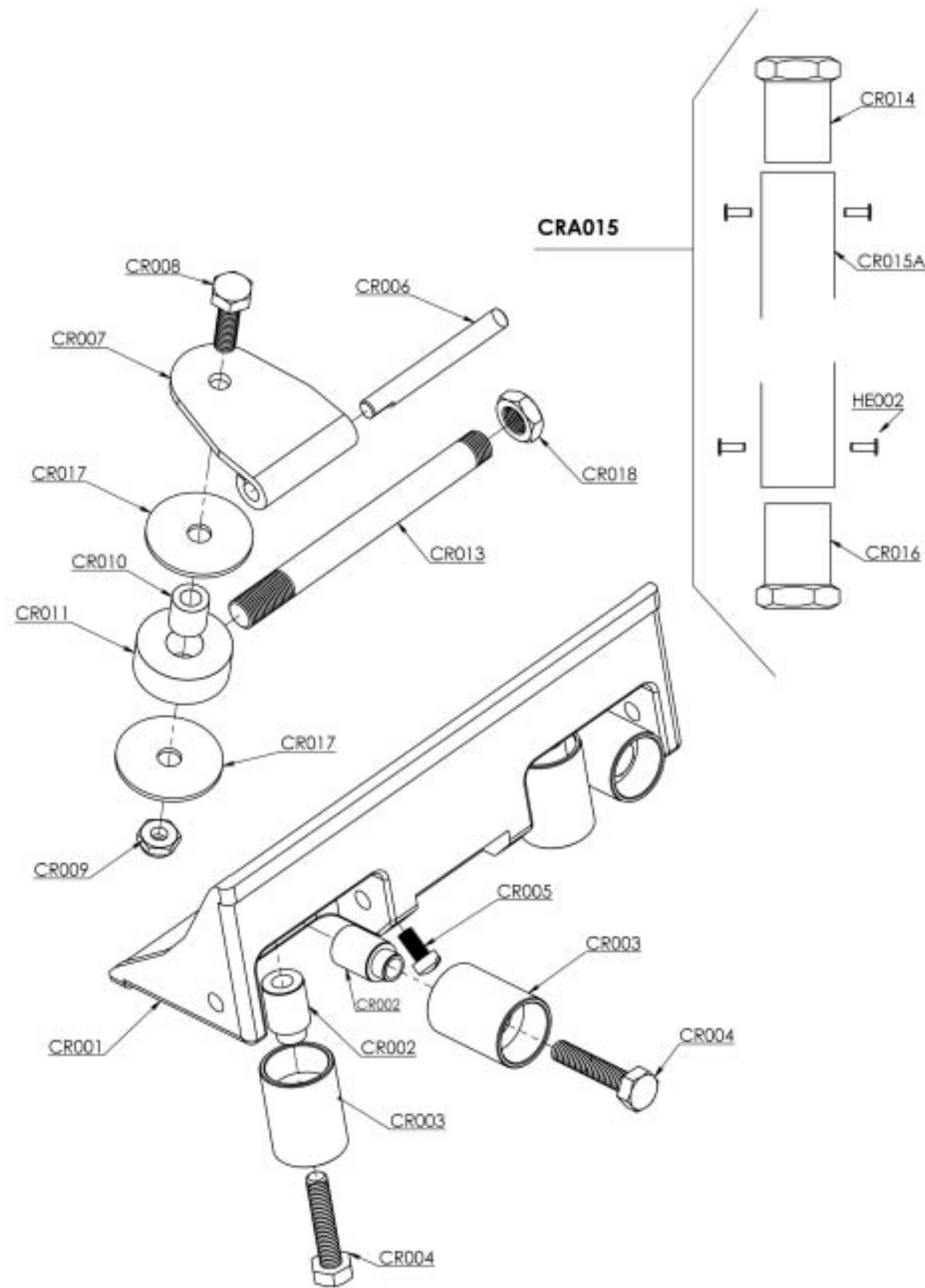


# TAPEPRO DRYWALL TOOLS



**TAPEPRO**  
DRYWALL TOOLS

For further information contact: WALLBOARD TOOL COMPANY PTY LTD: PO BOX 2508 Burleigh MDC QLD 4220 Australia.  
Telephone: 1300 653 177 Facsimile: 1300 657 442 Email: sales@wallboardtools.com.au Website: www.wallboardtools.com.au



**TAPEPRO CORNER ROLLER**

# TAPEPRO CORNER ROLLER



The Tapepro Corner Roller is designed for embedding paper joint tape into the 90° internal angles on vertical and horizontal joints. The Tapepro Corner Roller is used after the Tapepro Automatic Taper or Tapepro Mudbox.

## BEFORE USE

- > Ensure that the Tapepro Corner Roller is free from any dry joint compound.
- > Check that both the stainless steel rollers and pivot pin move freely.

## USING THE TAPEPRO CORNER ROLLER

1. Dip the Tapepro Corner Roller head in a bucket of clean water. This will reduce initial friction and tape drag.
2. Whilst standing directly in front of the internal, place the Tapepro Corner Roller in the centre of the internal joint. Roll gently down the internal to crease paper tape. **(CR-1)**
3. Roll the Tapepro Corner Roller up the internal increasing the pressure to the top. **(CR-2)**
4. Roll the full length of the internal several times with enough pressure to force any excess joint compound out from behind the paper tape.
5. When finishing angles between walls and ceilings hold the Tapepro Corner Roller at 45° to the internal. **(CR-3)**
6. Remove excess joint compound with a Tapepro Corner Finisher and let the internal dry before final coating. **(CR-4)**



## CLEANING

Your Tapepro Corner Roller should be cleaned after every use to maximise lifespan and maintain optimal performance.

1. Clean the Tapepro Corner Roller with a hose and stiff brush. **(CR-5)**
2. Ensure all joint compound is removed from roller and pivot pin.

**Tip:** Place the Tapepro Corner Roller in a bucket of clean water when not in use on the job site to prevent the joint compound from drying on the rollers between uses.



## MAINTENANCE

All replacement parts are available from your local plasterboard distributor or Wallboard Tool Company. For your nearest distributor please call Wallboard Tool Company on 1300 653 177 or visit our website at [www.wallboardtools.com.au](http://www.wallboardtools.com.au)

## WARRANTY

All manufacturing faults are covered under the warranty. All non wear parts are covered under a 3 year warranty.